

aqua_{40.00} Gas Sampling Module

Description

The new gas-sampling unit of **aqua_{40.00}** allows selective determination of water in gases, natural gases, industrial gases, biogases and other pressurized gases. The titrator is especially user-friendly because of its high mobility at gas sampling points. The gas-sampling module is mounted on the basic module and can be used for determination of water down to 1 ppm. The measuring gas is purged through gas sampling lines in order to avoid water condensation. Unwanted sulfurous compounds can be removed with a trap.

Moreover, the gas-sampling module allows precise and reproducible dosing of gas volumes into the measuring cell directly. The module can be connected to the sample with a pressure of maximum 250 bar to the gas sampling point or gas cylinder directly.

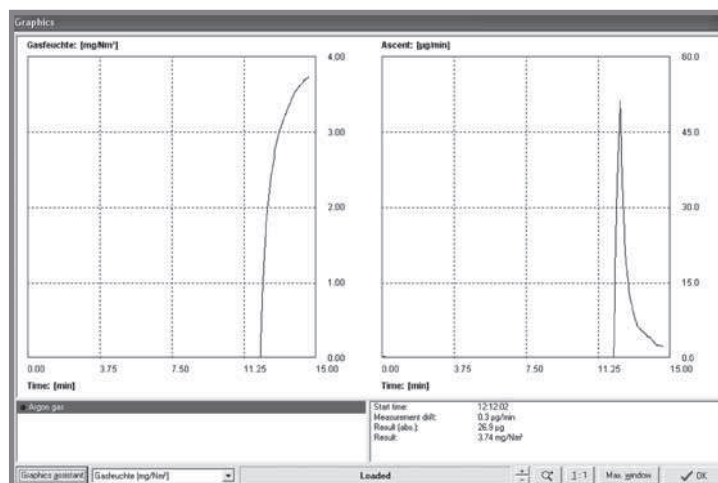
The software including the formula creator adapted specially can be used to calculate the result in $\mu\text{g}/\text{Nm}^3$. Ambient air pressure, gas temperature and dosed gas volume are included.



Gas Sampling Module for Laboratory

Applications

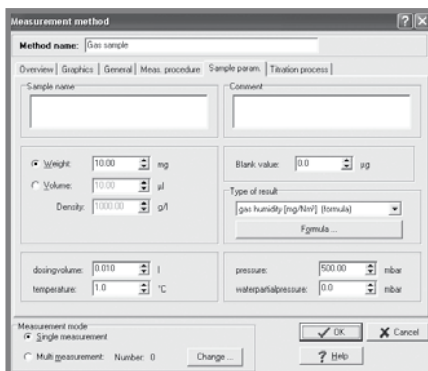
- Natural gases
- Industrial gases
- Biogases
- Pressurized gases



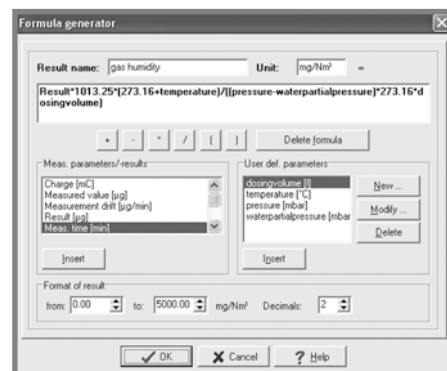
Measurement with argon gas

Principle

- Connection of gas transfer line (up to pressure of 250 bar) via quick fitting coupling
- Pressure is reduced by internal pressure regulator
- Gas flow is adjusted by either rotameter manually or mass flow controller automatically (optional)
- Measuring cell is equipped with optimized gas inlet device to realize a quantitative absorption into reagent
- Optional heating of gas transfer line
- Additional filter units to remove interfering sample compounds
- Fully automated measurement and switching of all valves



Method of a gas sample



Calculation of Result using Formula Creator

Advantages

- Microcoulometric analysis
- Determination of trace amounts of water
- Usable in the laboratory or portable in the field
- Direct connection to high pressure points up to 250 bar
- Quick connection via quick fitting coupling
- Filter unit to remove interfering compounds
- Bypass for quick purging and short conditioning times
- User-friendly software including formula creator
- Software Included conversion table for water vapour partial pressure



portable Gas Sampling Module

We are here for you



ECH Elektrochemie Halle GmbH
Otto-Eissfeldt-Str. 8
D-06120 Halle (Saale), Germany
Tel.: +49 345 2795700
Fax: +49 345 27957099
E-mail: info@ech.de
Internet: www.ech.de